

WINNER

BEST COMMERCIAL PROJECT \$500,001 - \$ 1M



Stephen Lawrence Constructions Pty Ltd

PROJECT LOCATION

Gormly Avenue, Wagga Wagga

JUDGES COMMENTS

The brief for this project was to construct professional consulting rooms which fitted in with the existing heritage area.

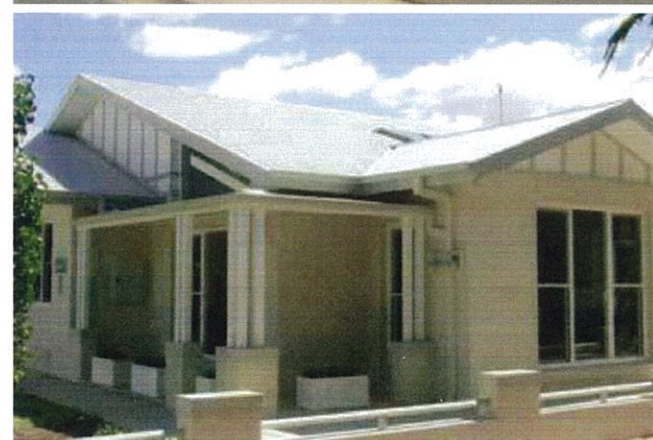
The building had to incorporate privacy for patients and quality spaces for employees.

Construction consisted of brick veneer rendered walls with painted finish, metal colourbond roof and four hundred series commercial double hung aluminium windows.

Internally the building features raked ceilings, operable skylights, and acoustic walls with thirteen millimetre soundstop sheeting with feature cornice.

The building also includes feature paneled doors, high quality finish joinery and a reception workspace with granite and marble finishes.

The judges commended the builder for this conversion of a home to a doctor's surgery in an area of high traffic with very limited access and complimented his quality of construction.



PROUDLY SPONSORED BY

